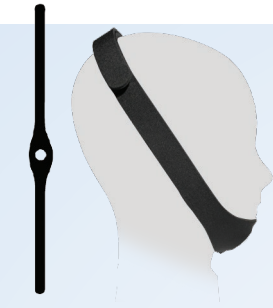


# CHINSTRAPS



## Universal Neoprene Chinstrap

Item# **CS001**

- One size fits most
- Attaches to itself at the top of the head
- Can be used with any nasal mask or pillows



## Basic Chinstrap

Item# **CS002**

Compare to Respireonics Basic

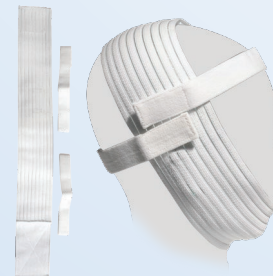
- One size fits most
- Attaches to the top strap of headgear
- Cups the chin for comfort
- Works best with any nasal mask



## Adjustable Neoprene Chinstrap

Item# **CS003S** 6in  
**CS003R** 7in  
**CS003M** 8in  
**CS003L** 9in  
**CS003XL** 10in

- Thin adjustable strap attaches at the top of the head. Thicker bottom strap attaches to itself at the back of the head.
- Great for hard-to-fit patients



## Deluxe Chinstrap

Item# **CS004S** 26in  
**CS004L** 28in

Compare to Respireonics Deluxe

- Attaches to itself at the top of the head, two smaller support straps keep the system in place
- Extra-wide strap distributes pressure to add comfort



## Comfort Chinstrap

Item# **CS005**

Compare to ResMed Sullivan

- One size fits most
- Easy to use - Attaches to itself at the top of the head
- Soft cloth chin cup adds comfort



## Premium Chinstrap

Item# **CS006**

Compare to Respireonics Premium

- One size fits most
- Attaches to itself at the top of the head to help keep the chin lifted. Smaller support strap attaches to a split section of the chinstrap and wraps around the head for added stability.



## Ruby Style Chinstraps

Item# **CS007S** Non-adjustable (no Velcro) 24in-28in  
**CS007M** 29-31in  
**CS007L** 22-36in

**CS007-ADJ** Adjustable w/ Velcro  
**CS007-ADJXL** Small, Medium, Large Extra Large



## Halo Style Chinstrap

Item# **CS025**

- Simple, innovative design distributes force to reduce pressure points
- Reduced buckling: Lies flat along the face
- Durable, soft, breathable material
- Chin rest creates more stability