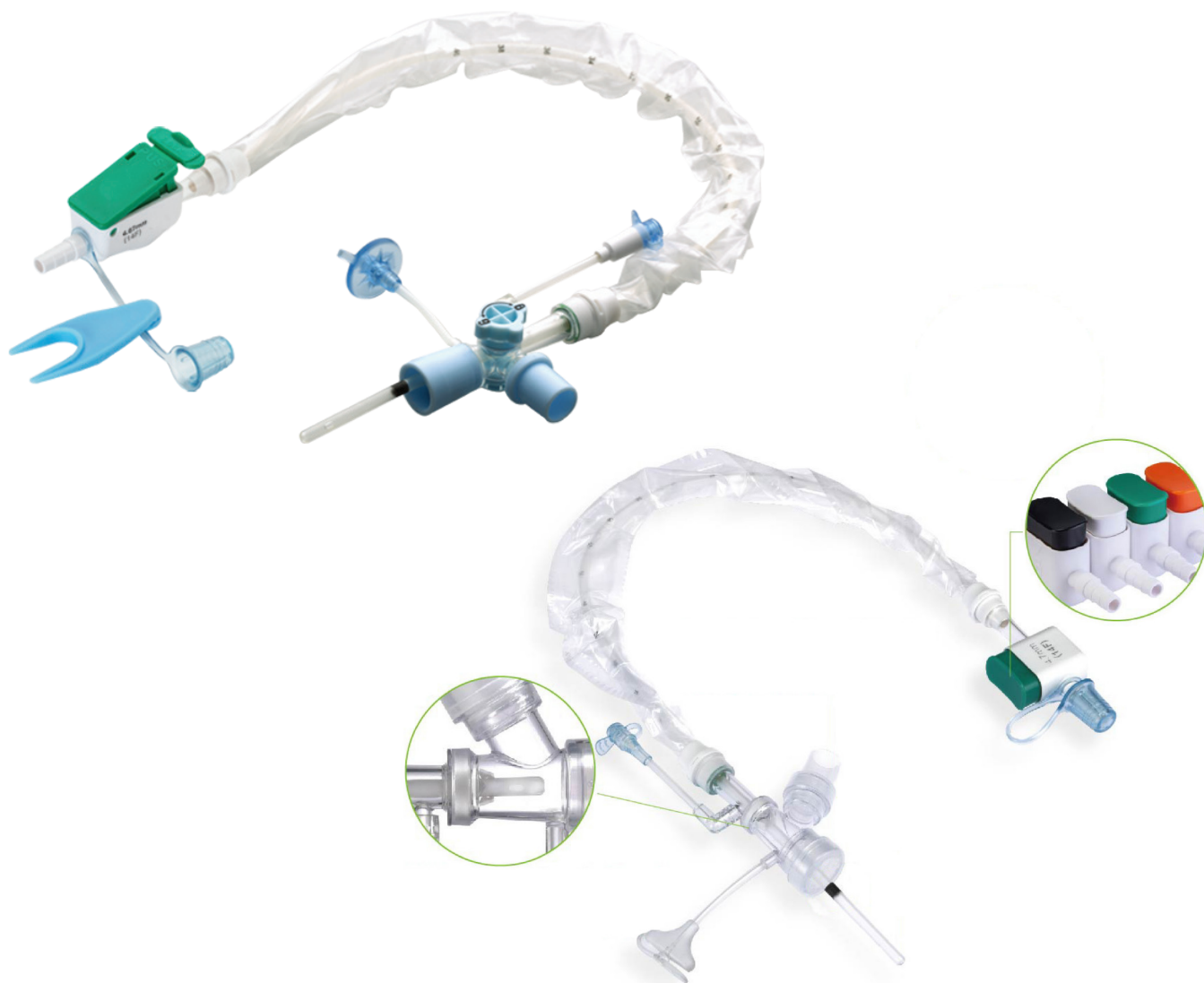


Closed Suction Systems





Area Business Director
Jackson Hanft
 C: 971-416-6695
 jackson@sunsethcs.com

Senior Area Business Director
Bryan Eckard
 C: 215-375-5765
 beckard@sunsethcs.com

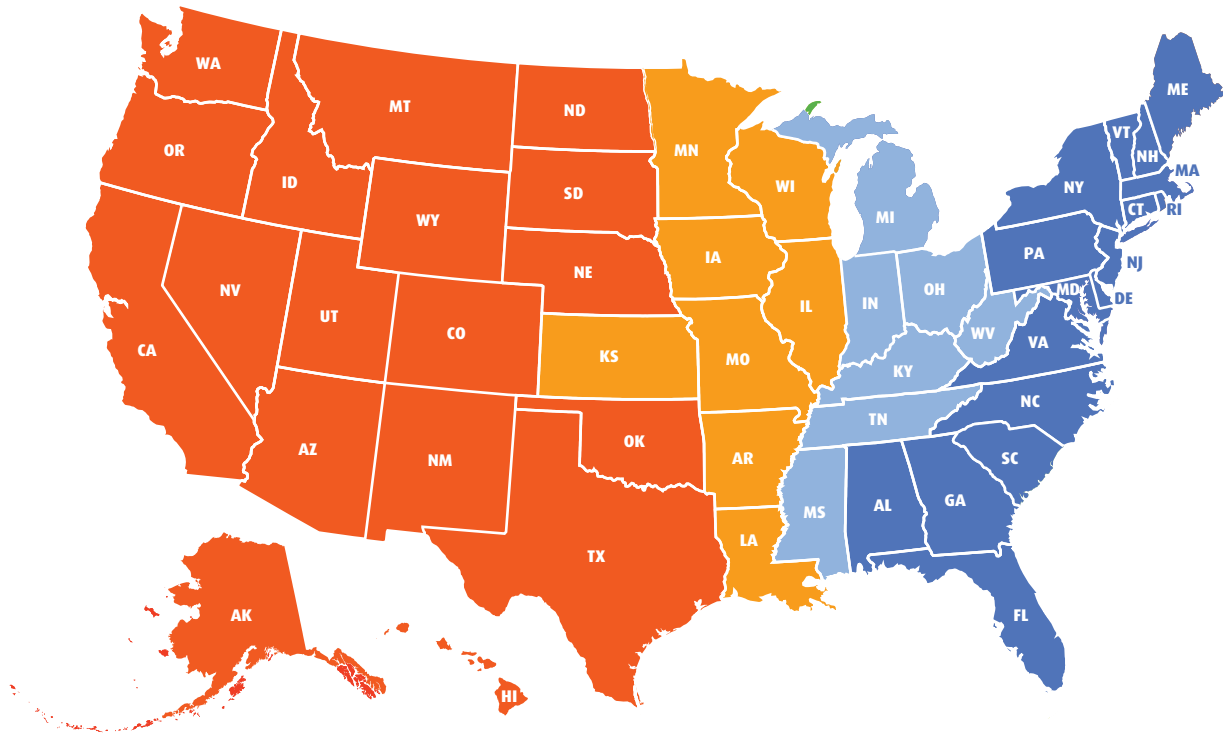
Director, Strategic Accounts
Lisa Iannazzone
 C: 636-222-3134
 lisa@sunsethcs.com

Sales Representative
Egle Sventnickaite
 O: 872-258-1654
 esventnickaite@sunsethcs.com

Sales Representative
Owen Ruth
 O: 312-533-2451
 oruth@sunsethcs.com

Director, Sales Operations
Mark Lipson
 C: 248-981-9669
 O: 312-533-2465
 mlipson@sunsethcs.com

Sales Representative
Christian Straussner
 O: 872-282-0746
 C: 847-525-6340
 cstraussner@sunsethcs.com



Corporate Office

Phone 872-275-3210

Fax 312-997-9985

180 N Michigan Ave Ste 2000
Chicago, IL 60601

Central Returns/Distribution Center

279 Madsen Dr Ste 101
Bloomington, IL 60108

West Returns/Distribution Center

6750 W Van Buren St
Phoenix, AZ 85043

Standard Switch

Sterile and latex-free

ISO color coded for instant recognition of catheter sizes.



Once the airway is clear, withdraw the catheter completely into the plastic sheath. A black mark on the catheter indicates full withdrawal.



Smooth tubing surface and atraumatic rounded catheter tip for minimal tracheal wall injury.

With the unique isolation valve, 72hr closed suction system features safe and simple access for mechanical ventilated patients for 72 hours of continuous use.

24 Hour Adult

Endotracheal 540mm

Item#	Description
VEN46001000A	10Fr
VEN46001000AM	10Fr, MDI Port
VEN46001200	12Fr
VEN46001200M	12Fr, MDI Port
VEN46001400	14Fr
VEN46001400M	14Fr, MDI Port
VEN46001600	16Fr
VEN46001600M	16Fr, MDI Port

Tracheostomy 305mm

VEN46011000A	10Fr
VEN46011000AM	10Fr, MDI Port
VEN46011200	12Fr
VEN46011200M	12Fr, MDI Port
VEN46011400	14Fr
VEN46011400M	14Fr, MDI Port
VEN46011600	16Fr
VEN46011600M	16Fr, MDI Port

72 Hour Adult

Endotracheal 540mm

Item#	Description
VEN56051000A	10Fr
VEN56051000AM	10Fr, MDI Port
VEN56051200	12Fr
VEN56051200M	12Fr, MDI Port
VEN56051400	14Fr
VEN56051400M	14Fr, MDI Port
VEN56051600	16Fr
VEN56051600M	16Fr, MDI Port

Tracheostomy 305mm

VEN56061000A	10Fr
VEN56061000AM	10Fr, MDI Port
VEN56061200	12Fr
VEN56061200M	12Fr, MDI Port
VEN56061400	14Fr
VEN56061400M	14Fr, MDI Port
VEN56061600	16Fr
VEN56061600M	16Fr, MDI Port

Neonatal/Pediatric

With Y-Adapter

Item#	Description
VEN66000500	305mm, 5Fr
VEN66000600	305mm, 6Fr
VEN66000700	305mm, 7Fr
VEN66000800	305mm, 8Fr
VEN66001000	405mm, 10Fr
VEN66000500M	305mm, 5Fr, MDI Port
VEN66000600M	305mm, 6Fr, MDI Port
VEN66000700M	305mm, 7Fr, MDI Port
VEN66000800M	305mm, 8Fr, MDI Port
VEN66001000M	405mm, 10Fr, MDI Port

Deluxe Switch (One-handed operation)

Sterile and latex-free

Suction Control Switch

Ergonomic suction control switch with a built-in security lock to visually determine if the device is in the OFF/ON position. Offers a quick and easy, single handed operation design, which allows you to keep your eye on the patient and do no harm. One handed operation allows the free hand to support the ET or Trach device to ensure less trauma to the site.

Irrigation Port

Offers a one-way valve to prevent backflow leakage and easy access for cleaning the closed suction system.

MDI Port

Provides access for drug delivery as needed. Large and easy to grip port allows for rapid medication introduction.

Catheter Tip

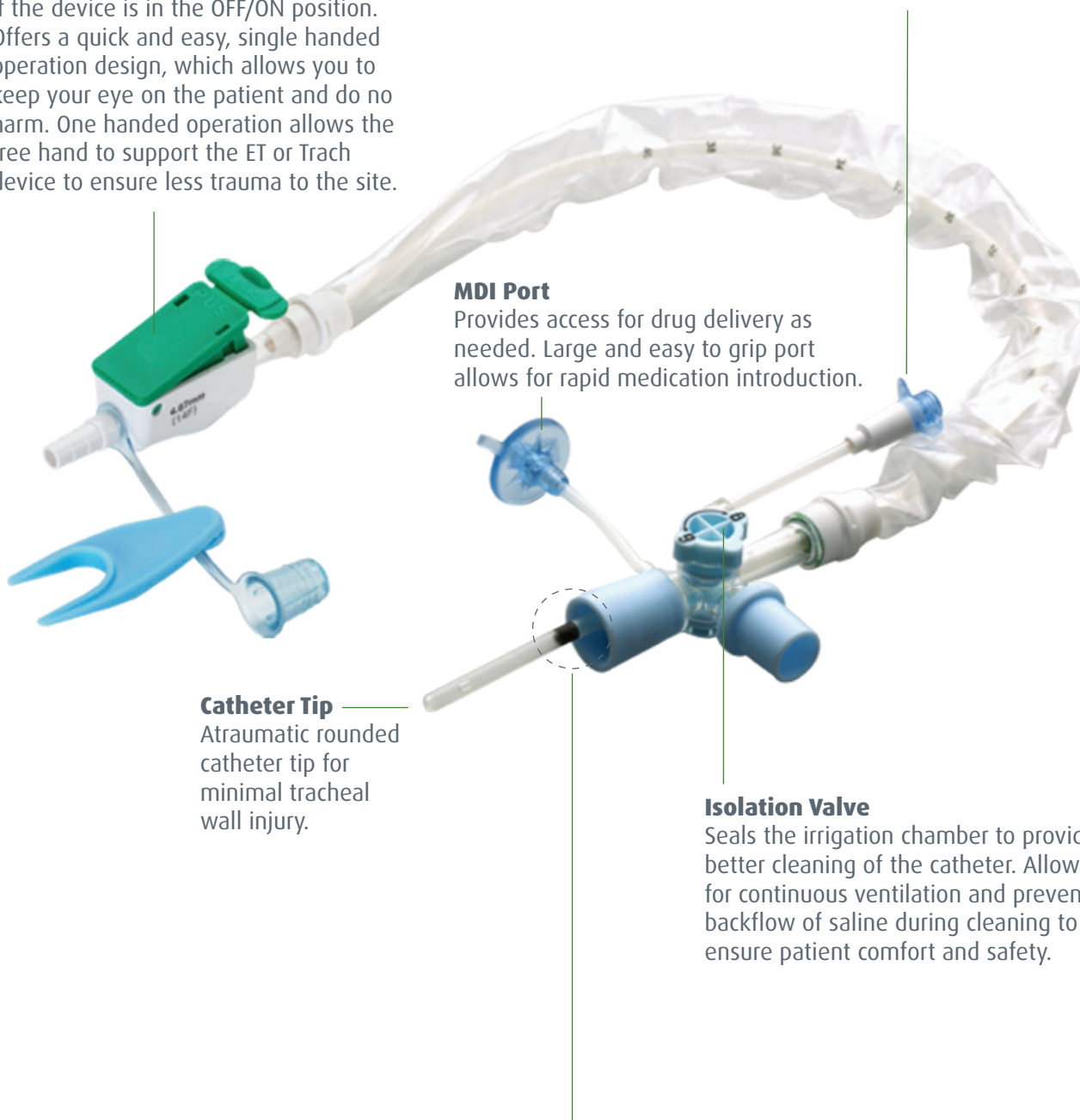
Atraumatic rounded catheter tip for minimal tracheal wall injury.

Isolation Valve

Seals the irrigation chamber to provide a better cleaning of the catheter. Allows for continuous ventilation and prevents backflow of saline during cleaning to ensure patient comfort and safety.

Black Ring Indicator

Ensures that the catheter is properly withdrawn from the ET or Trach device. Black ring must be visible in the plastic sheath after suctioning the patient.



Deluxe Switch (One-handed operation)

Sterile and latex-free

24 Hour Adult

Endotracheal 540mm

Item#	Description
VEN160100A	10Fr
VEN160100AM	10Fr, MDI Port
VEN160120	12Fr
VEN160120M	12Fr, MDI Port
VEN160140	14Fr
VEN160140M	14Fr, MDI Port
VEN160160	16Fr
VEN160160M	16Fr, MDI Port

With Wedge + Adapter

Item#	Description
VEN162100A	10Fr
VEN162100AM	10Fr, MDI Port
VEN162120	12Fr
VEN162120M	12Fr, MDI Port
VEN162140	14Fr
VEN162140M	14Fr, MDI Port
VEN162160	16Fr
VEN162160M	16Fr, MDI Port

Tracheostomy 305mm

VEN161100A	10Fr
VEN161100AM	10Fr, MDI Port
VEN161120	12Fr
VEN161140	14Fr
VEN161160	16Fr
VEN161160M	16Fr, MDI Port

With Wedge + Adapter

VEN163100A	10Fr
VEN163100AM	10Fr, MDI Port
VEN163120	12Fr
VEN163140	14Fr
VEN163160	16Fr

72 Hour Adult

Endotracheal 540mm

Item#	Description
VEN365100A	10Fr
VEN365100AM	10Fr, MDI Port
VEN365120	12Fr
VEN365120M	12Fr, MDI Port
VEN365140	14Fr
VEN365140M	14Fr, MDI Port
VEN365160	16Fr
VEN365160M	16Fr, MDI Port

With Wedge + Adapter

Item#	Description
VEN367100A	10Fr
VEN367100AM	10Fr, MDI Port
VEN367120	12Fr
VEN367120M	12Fr, MDI Port
VEN367140	14Fr
VEN367140M	14Fr, MDI Port
VEN367160	16Fr
VEN367160M	16Fr, MDI Port

Tracheostomy 305mm

VEN366100A	10Fr
VEN366100AM	10Fr, MDI Port
VEN366120	12Fr
VEN366120M	12Fr, MDI Port
VEN366140	14Fr
VEN366140M	14Fr, MDI Port
VEN366160	16Fr
VEN366160M	16Fr, MDI Port

With Wedge + Adapter

VEN368100A	10Fr
VEN368100AM	10Fr, MDI Port
VEN368120	12Fr
VEN368120M	12Fr, MDI Port
VEN368140	14Fr
VEN368140M	14Fr, MDI Port
VEN368160	16Fr
VEN368160M	16Fr, MDI Port

Neonatal/Pediatric

Item#	Description
VEN26000500	305mm, 5Fr
VEN26000500M	305mm, 5Fr, MDI Port
VEN26000600	305mm, 6Fr
VEN26000600M	305mm, 6Fr, MDI Port
VEN26000700	305mm, 7Fr
VEN26000700M	305mm, 7Fr, MDI Port
VEN26000800	305mm, 8Fr
VEN26000800M	305mm, 8Fr, MDI Port
VEN26001000	405mm, 10Fr
VEN26001000M	405mm, 10Fr, MDI Port

