



# Pediatric

## Product Catalog



**Contracted Supplier**



**vizient**  
Awarded Supplier





Sales Representatives



Owen Ruth
312-533-2451
oruth@sunsethcs.com



Christian Straussner
872-282-0746
cstrausner@sunsethcs.com



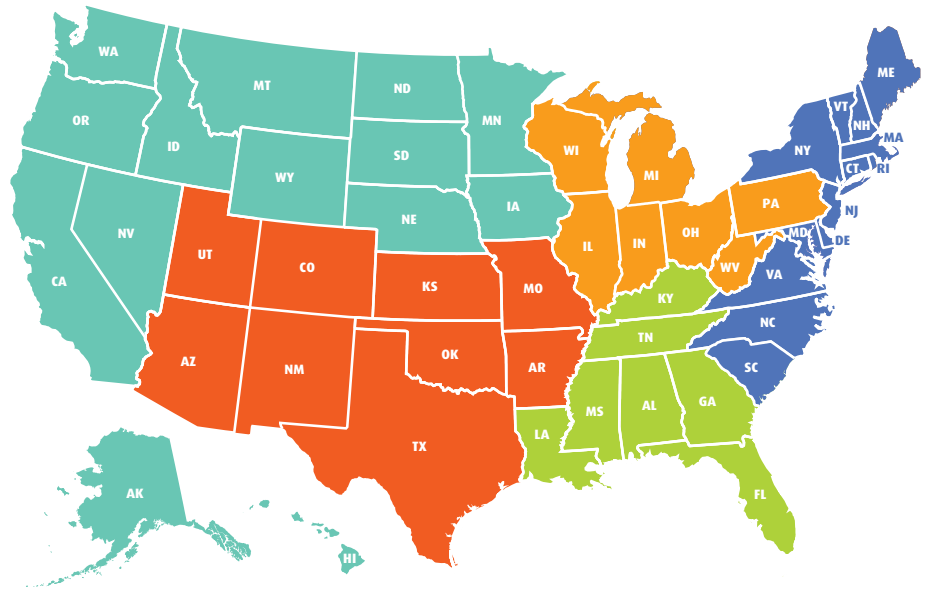
Cindy Geighes
312-533-2478
cgeighes@sunsethcs.com



Egle Sventnickaite
872-258-1654
esventnickaite@sunsethcs.com



Hunter Baudino
262-788-1855
hbaudino@sunsethcs.com



Director, Sales Operations
Mark Lipson
312-533-2465
mlipson@sunsethcs.com

Contract Manager, Strategic Accounts
Gina Rosenberg
914-837-5215
grosenberg@sunsethcs.com

RRT Clinical Specialist
Carlos Mejia MS-QSM, RRT, RPGST, LSSB
cmejia@sunsethcs.com

Director, Strategic Accounts
Lisa Iannazzone RN, BSN
636-222-3134
lisa@sunsethcs.com

Sales and Marketing Manager
Jackson Hanft
971-416-6695
jackson@sunsethcs.com

RRT Clinical Specialist
Krystle Bodine BS, RRT
kbodine@sunsethcs.com

Corporate Office

Phone 872-275-3210
Fax 312-997-9985
180 N Michigan Ave Ste 2000
Chicago, IL 60601

Central Returns/Distribution Center

279 Madsen Dr Ste 101
Bloomington, IL 60108

West Returns/Distribution Center

6750 W Van Buren St
Phoenix, AZ 85043

# Content

## **NIV** **Page**

---

NIV Masks	4
CPAP/NIV Masks	4

## **Respiratory Disposables** **Page**

---

Trach Ties	5
HMEs	5
Trach Masks	5
Adapters	5
Spirometers	6
Oxygen Cannula and Accessories	6
Oxygen Masks	7
Air Entrainment Masks	8
Oxygen Supply Tubing	8
Vent Circuits	9

## **Medication Delivery** **Page**

---

Nebulizers	10-11
Nebulizer Kits	11
Aerosol Masks	11
Inhaler Chamber	11

## **Closed Suction Catheters** **Page**

---

Standard Switch	12
Deluxe Switch	13

## **Laryngeal Masks** **Page**

---

Silicone Disposable	14
Silicone Reusable	14
Flexible Silicone Disposable	14
Flexible Silicone Reusable	14
PVC Disposable	15
Flexible PVC Disposable	15
Silicone Disposable Dual Seal	15
PVC Disposable Dual Seal	15

## **Oxygen Regulators** **Page**

---

Microdial Flowmeter	16
Regulators	17

## **Resuscitation Devices** **Page**

---

Resuscitators	18
Breathing Masks	18

## **Anesthesia** **Page**

---

PeDIA	19
-------	----



 **PREMIER** | **Contracted Supplier**

Respiratory Disposables • Contract PP-NS-1741  
Closed Suction Catheters • Contract PP-NS-1571  
Resuscitation Devices • Contract PP-NS-1762  
Medication Delivery • Contract PP-NS-1753  
Laryngeal Masks • Contract PP-OR-2217



**vizient**  
Awarded Supplier

NIV • Contract MS1049  
Respiratory Disposables • Contract MS1087  
MDD • Contract MS1097



## SleepNet MiniMe 2 Pediatric Nasal Mask V

10/pack

### Vented Mask with Headgear

Size	Item#
Extra Small	<b>CM60216</b>
Small	<b>CM60217</b>
Medium	<b>CM60218</b>
Large	<b>CM60221</b>

### Non-Vented Mask with Headgear

Size	Item#
Extra Small	<b>CM60256</b>
Small	<b>CM60257</b>
Medium	<b>CM60258</b>
Large	<b>CM60261</b>

novaplus<sup>+</sup>

### Vented Mask with Headgear

Size	Item#
Small	<b>VCM055S</b>
Medium	<b>VCM055M</b>
Large	<b>VCM055L</b>

### Non-Vented Mask with Headgear

Size	Item#
Extra Small	<b>VCM056XS</b>
Small	<b>VCM056S</b>
Medium	<b>VCM056M</b>
Large	<b>VCM056L</b>

HCPCS#  
MASK - A7034  
HEADGEAR - A7035

### Replacement Headgear

Size	Item#
Extra Small/Small	<b>HG027S</b>
Medium/Large	<b>HG027L</b>



## Ray Pediatric CPAP/NIV Masks V

10/pack

### Mask with Headgear, Tube, and Replaceable Cushion

Size	Item#
Small	<b>CM061S</b>
Medium	<b>CM061M</b>
Large	<b>CM061L</b>
Extra Large	<b>CM061XL</b>

### Replacement Cushions

Size	Item#
Small	<b>CUCM061S</b>
Medium	<b>CUCM061M</b>
Large	<b>CUCM061L</b>
Extra Large	<b>CUCM061XL</b>

HCPCS#  
MASK - A7030  
HEADGEAR - A7035  
CUSHION - A7031



Comparable to  
Nonny Masks

10/pack

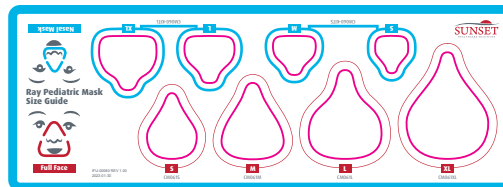
### Nasal Mask with Headgear, Tube, and Replaceable Cushions

Comes with	Item#
S&M Cushions	<b>CM060-KITS</b>
L&XL Cushions	<b>CM060-KITL</b>

### Replacement Cushions

Size	Item#
Small	<b>CUCM060S</b>
Medium	<b>CUCM060M</b>
Large	<b>CUCM060L</b>
Extra Large	<b>CUCM060XL</b>

HCPCS#  
MASK - A7034  
HEADGEAR - A7035  
CUSHION - A7032



Available  
Size Guide

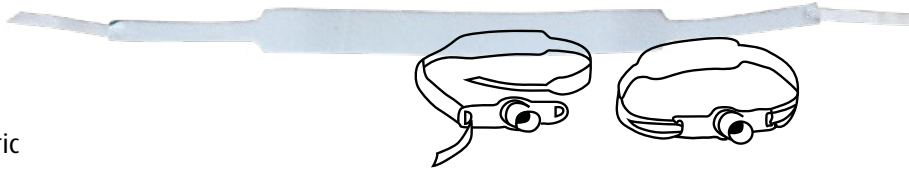
## Tracheostomy Ties with Fastener Tabs **P**

**20/case**

### One-piece

- Easy on

Item# **RES029P** Pediatric



- Designed to provide secure stabilization of the tracheostomy tube
- Made from soft foam and cotton

### Two-piece

- Easy off

Item# **RES030P** Pediatric



## Heat Moisture Exchanger **V**

**30/case**

Item# **RES027NE-10**  
Inline HME — Neonatal



<b>TV Range (mL)</b>	15-50
<b>Moisture Output (mg H<sub>2</sub>O/L)</b>	30
<b>Weight (g)</b>	4.5
<b>Resistance (cm H<sub>2</sub>O)</b>	0.5 @ 10 LPM
<b>Dead Space (mL)</b>	2.5
<b>Connection (mm)</b>	15M,15F

## Tracheostomy Mask with O<sub>2</sub> Connector **V**

**50/case**

Item# **RES2230**  
Pediatric Size



- Latex-free
- 360° swivel in 2 places allows access from either side of the patient
- Comes with removable adapter to fit with aerosol or O<sub>2</sub> supply tubing

## Oxygen Bleed-In Adapter **P**

Item# **RES019** 10/pack  
22mm with 6mm  
Rotating Stem



## Volumetric Incentive Spirometer P

12/case

Item#  
**RES055P**  
Pediatric

- Chambers for ball and volumetric
- Tube
- Mouthpiece

The Volumetric Incentive Spirometer helps patients perform and monitor their own post-surgical breathing exercises. The patients are encouraged to breathe in from the device as slowly and as deeply as possible.

- Adjustable target indicator provides a volumetric guideline for adequate lung exercise
- Dual-sided, clear and legible identification of volumes
- Inspiratory indicator encourages patients to maintain an appropriate rate inspiration
- Compact and ergonomic design



## Pediatric, Infant, and Neonate Cannula V

50/case

Item #	Size	Tubing Length	Connector	Touch	Ear Cushions
<b>RES1100P</b>	Pediatric	None	Standard	Standard	No
<b>RES1107I</b>	Infant	7 ft	Standard	Standard	No
<b>RES1107P</b>	Pediatric	7 ft	Standard	Standard	No
<b>RES1107PEC</b>	Pediatric	7 ft	Standard	Standard	Yes
<b>RES1107PECU</b>	Pediatric	7 ft	Universal	Standard	Yes
<b>RES1107SI</b>	Infant	7 ft	Standard	Soft	No
<b>RES1107NE</b>	Neonate	7 ft	Standard	Standard	No
<b>RES1107SNE</b>	Neonate	7 ft	Standard	Soft	No
<b>RES1107SP</b>	Pediatric	7 ft	Standard	Soft	No
<b>RES1107SPU</b>	Pediatric	7 ft	Universal	Soft	No
<b>RES1114SP</b>	Pediatric	14 ft	Standard	Soft	No
<b>RES1114SPU</b>	Pediatric	14 ft	Universal	Soft	No



## Ear Cushions for Cannula V P

Item# **RES020**  
Cushions Only  
50 Pairs/case

- Add cushions to existing cannula



## High Concentration Oxygen Mask V

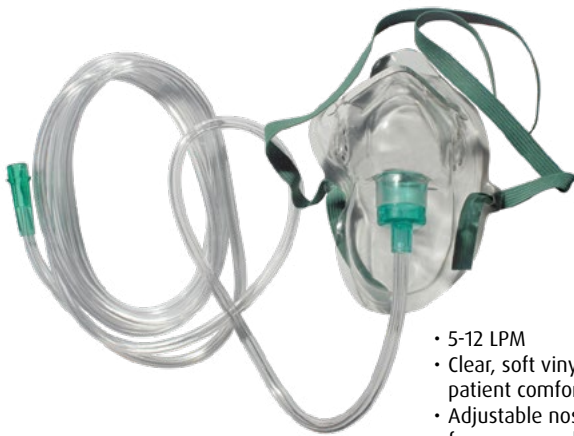
50/case

Item #	Size	Tubing Length
<b>RES2202I</b>	Infant	None
<b>RES2202I7</b>	Infant	7 ft
<b>RES2202P</b>	Pediatric	None
<b>RES2202P7</b>	Pediatric	7 ft

## Medium Concentration Oxygen Mask V

50/case

Item #	Size	Tubing Length	Connector
<b>RES2203P</b>	Pediatric	None	Standard
<b>RES2100P</b>	Pediatric	7 ft	Standard
<b>RES2203I</b>	Infant	None	Standard
<b>RES2203I7</b>	Infant	7 ft	Standard
<b>RES2203P7</b>	Pediatric	7 ft	Standard



- 5-12 LPM
- Clear, soft vinyl for patient comfort
- Adjustable nose clip for secure seal

## Non-Rebreather Oxygen Mask V

50/case

Item #	Size	Tubing Length	Connector	Safety Vent
<b>RES2102I</b>	Infant	7 ft	Standard	No
<b>RES2102IM</b>	Infant	None	Standard	No
<b>RES2102P</b>	Pediatric	7 ft	Standard	No
<b>RES2102PS</b>	Pediatric	7 ft	Standard	Yes
<b>RES2102PSM</b>	Pediatric	None	Standard	Yes
<b>RES2102PSU</b>	Pediatric	7ft	Universal	Yes
<b>RES2102PU</b>	Pediatric	7 ft	Universal	No

- 10+ LPM
- Low-resistance check valves prevent rebreathing and allow exhaled gas to escape



## Air Entrainment Mask

With Flex Tube

50/case

Item#	Kit	Tubing Length	Connector	
<b>RES2400P</b>	Mask Only	7 ft	Standard	V
<b>RES2400PK</b>	Yes	7 ft	Standard	V P
<b>RES2400PKU</b>	Yes	7 ft	Universal	V
<b>RES2400PU</b>	Mask Only	7 ft	Universal	V P



## Oxygen Supply Tubing V

Item #	Length	Connector	Bore	Color	Qty
<b>RES3007</b>	7ft	Standard	Channelled	None	50
<b>RES3007SB</b>	7 ft	Standard	Smooth	None	50
<b>RES3007U</b>	7 ft	Universal	Channelled	None	50
<b>RES3015</b>	15 ft	Standard	Channelled	None	50
<b>RES3015G</b>	15 ft	Standard	Channelled	Green	50
<b>RES3025</b>	25 ft	Standard	Channelled	None	25
<b>RES3025G</b>	25 ft	Standard	Channelled	Green	25
<b>RES3025U</b>	25 ft	Universal	Channelled	None	25
<b>RES3030</b>	30 ft	Standard	Channelled	None	20
<b>RES3030G</b>	30 ft	Standard	Channelled	Green	20
<b>RES3040G</b>	40 ft	Standard	Channelled	Green	20
<b>RES3050</b>	50 ft	Standard	Channelled	None	20
<b>RES3050G</b>	50 ft	Standard	Channelled	Green	20

- 6-channel
- PHT/DEHP-free

### Universal Connector



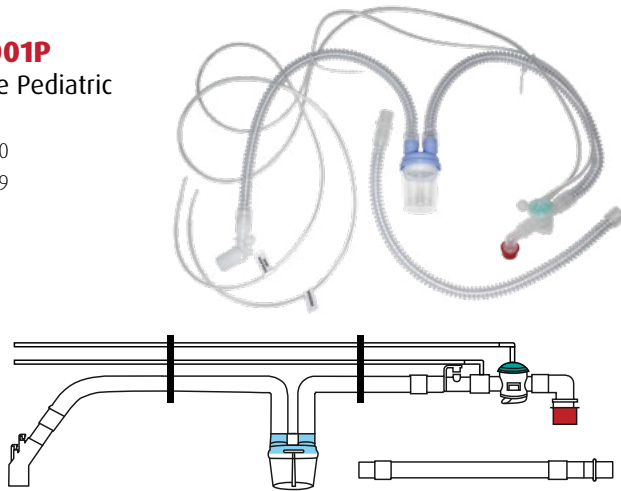


### Non-Heated Breathing Circuits

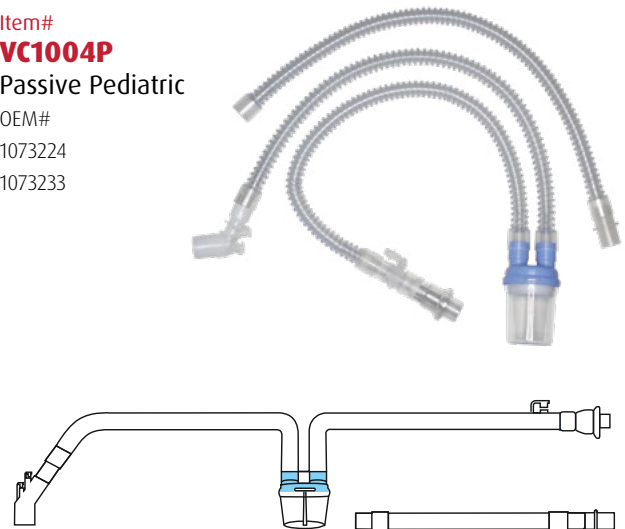
For use with Respiration Trilogy  
22mm cuffs  
**30/case**

Item#	OEM#	Mode	Water Trap	Size	Tube Diameter
<b>VC1001P</b>	1073220 & 1073229	Active	Yes	Pediatric	15mm
<b>VC1004P</b>	1073224 & 1073233	Passive	Yes	Pediatric	15mm

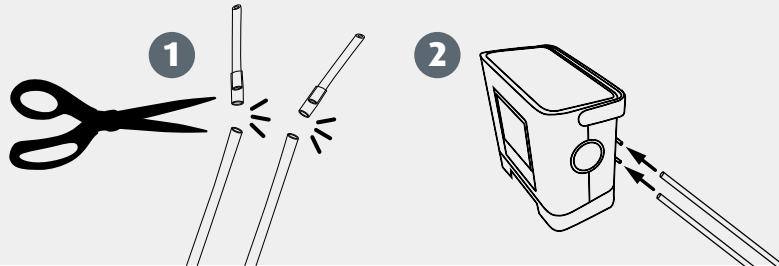
Item#  
**VC1001P**  
Active Pediatric  
OEM#  
1073220  
1073229



Item#  
**VC1004P**  
Passive Pediatric  
OEM#  
1073224  
1073233



To use active circuits with Respiration Trilogy, simply cut ends off pressure and exhalation lines.



### Non-Heated Dual Limb Breathing Circuits **V**

**10/case**

REF	Size	Humidifier Limb	Water Trap
<b>VC2001PZ</b>	Pediatric	No	No
<b>VC2002PZ</b>	Pediatric	Yes	No

## Compressor Nebulizers

Item#

**NEB100** 

Each

### Includes

- Compressor
- Disposable T-Piece Kit
- Foam Filters

### NEB100-R

- Disposable T-Piece Kit (RES091)
- Reusable T-Piece Kit (RES093)
- Foam Filters (BF018 x5)



- Rust-resistant
- Quiet (below 60dBA)
- 6ml medication capacity
- Average nebulization rate above 0.2ml/min
- Particle size: respirable fraction 0.5 to 5um 0.5um 80%
- Compressor pressure range 30-45 PSI
- Operation pressure range 12-14 PSI
- Liter flow range 8-10 LPM

## Sunny the Bear

### NEB300BEAR

- Disposable Pediatric Mask (RES2210)
- Disposable T-Piece Kit (RES091)
- Foam Filters (BF018 x5)

### NEB300BEAR-R

- Disposable Pediatric Mask (RES2210)
- Disposable T-Piece Kit (RES091)
- Reusable T-Piece Kit (RES093)
- Foam Filters (BF018 x5)



## Gordon the Fish

### NEB300FISH

- Disposable Pediatric Mask (RES2210)
- Disposable T-Piece Kit (RES091)
- Foam Filters (BF018 x5)

### NEB300FISH-R

- Disposable Pediatric Mask (RES2210)
- Disposable T-Piece Kit (RES091)
- Reusable T-Piece Kit (RES093)
- Foam Filters (BF018 x5)



## Handheld Compressor Nebulizer

Item#

**NEB200**

Each

### Included

- Compressor
- Medication cup
- AC power adapter
- Air hose
- Elbow
- Mouthpiece
- Mask
- 4 AA batteries

- Runs on 4 AA batteries or AC power adapter
- Portable (small and weighs only 1/2 pound)
- Quiet (60dBA)
- Fine particle size (approximately 3 microns)
- No replacement filter required



## Handheld Mesh Nebulizer

Item#

**NEB401**

Each

### With internal rechargeable battery

### Included

- Main unit
- Medicine cup
- Disposable mouthpiece
- Disposable adult mask
- Disposable pediatric mask
- USB cord
- Carrying bag
- Instruction manual

- Small particle size: MMAD 2.2µm\*
- Efficient: Low Residual Liquid
- Convenient: Small and Portable
- Quiet: ≤50dB (at one meter)
- Modern: Rechargeable Lithium Battery



## Handheld Mesh Nebulizer

Item#  
**NEB402**

**With internal rechargeable battery**

**Included**  
Medication cup  
USB cord  
Mask  
Mouthpiece  
Portable bag  
Manual



**Particle Size** MMAD < 5µm  
**Nebulization Rate** 0.25ml/min-0.9ml/min  
**Medication Cup Capacity** 10ml (Max)  
**Device Weight** Approx. 1/4 lb  
**Device Size** Approx. 1 1/2 x 2 x 3 7/8 inches

## Disposable Nebulizer Kit V

Item# **RES092**  
Pediatric Size  
**50/case**

- Pediatric aerosol mask
- 6cc jet nebulizer bottle
- 7ft supply tube



## Aerosol Mask V P

**50/case**

**RES2210**  
Pediatric Size

- Clear, soft vinyl for patient comfort
- Adjustable nose clip for secure seal
- Connector accepts 22mm aerosol tubing
- Individually packaged



## SperaChamber V

Anti-Static Valved Inhaler Chamber for Metered Dose Inhaler



Item#  
**RES195-10**  
**10/case**

**RES195-50**  
**50/case**

- Inhalation valve
- Universal adapter
- Spiral vents
- Seal with exhalation safety valve
- Latex-free and DEHP-free



**SperaChamber with Mask**  
**10/case**

Item #	Size
<b>RES195MS</b>	Small (Infant)
<b>RES195MM</b>	Medium (Pediatric)
<b>RES195ML</b>	Large (Adult)

# Standard Switch

## Sterile and latex-free

### Neonatal/Pediatric P

#### With Y-Adapter

Item#	Description	Y-Adapter Size
VEN66000500	305mm, 5Fr	2-2.5mm
VEN66000600	305mm, 6Fr	2.5-3.5mm
VEN66000700	305mm, 7Fr	3-4mm
VEN66000800	305mm, 8Fr	3.5-4.5mm
VEN66001000	405mm, 10Fr	4.5-5.5mm
VEN66000500M	305mm, 5Fr, MDI Port	2-2.5mm
VEN66000600M	305mm, 6Fr, MDI Port	2.5-3.5mm
VEN66000700M	305mm, 7Fr, MDI Port	3-4mm
VEN66000800M	305mm, 8Fr, MDI Port	3.5-4.5mm
VEN66001000M	405mm, 10Fr, MDI Port	4.5-5.5mm

ISO color coded for instant recognition of catheter sizes.



Smooth tubing surface and atraumatic rounded catheter tip for minimal tracheal wall injury.

Once the airway is clear, withdraw the catheter completely into the plastic sheath. A black mark on the catheter indicates full withdrawal.

# Deluxe Switch (One-handed operation)

## Sterile and latex-free

### Neonatal/Pediatric P

Item#	Description
VEN26000500	305mm, 5Fr
VEN26000500M	305mm, 5Fr, MDI Port
VEN26000600	305mm, 6Fr
VEN26000600M	305mm, 6Fr, MDI Port
VEN26000700	305mm, 7Fr
VEN26000700M	305mm, 7Fr, MDI Port
VEN26000800	305mm, 8Fr
VEN26000800M	305mm, 8Fr, MDI Port
VEN26001000	405mm, 10Fr
VEN26001000M	405mm, 10Fr, MDI Port

#### Suction Control Switch

Ergonomic suction control switch with a built-in security lock to visually determine if the device is in the OFF/ON position. Offers a quick and easy, single-handed operation design, which allows you to keep your eye on the patient and do no harm. One-handed operation allows the free hand to support the ET or Trach device to ensure less trauma to the site.

#### MDI Port

Provides access for drug delivery as needed. Large and easy to grip port allows for rapid medication introduction.

#### Irrigation Port

Offers a one-way valve to prevent backflow leakage and easy access for cleaning the closed suction system.

#### Black Ring Indicator

Ensures that the catheter is properly withdrawn from the ET or Trach device. Black ring must be visible in the plastic sheath after suctioning the patient.

#### Catheter Tip

Atraumatic rounded catheter tip for minimal tracheal wall injury.





## Silicone Disposable Laryngeal Masks P

Item #	Size
ALM1001	#1
ALM1015	#1.5
ALM1002	#2
ALM1025	#2.5
ALM1003	#3



- Medical grade silicone for super compatibility and patient comfort
- No epiglottis bars for easy insertion of fiberoptic scope, introducers and suction catheters
- Available with seven sizes for all patient use

## Silicone Reusable Laryngeal Masks P

Item #	Size
ALM1001R	#1
ALM1015R	#1.5
ALM1002R	#2
ALM1025R	#2.5
ALM1003R	#3



- Reusable Silicone Laryngeal Masks are designed to be sterilized and used up to 40 times
- Durable high temperature resistant material suitable for autoclave sterilization
- Serial no. is printed on each connector for easy tracking
- Additional user card for record of device usage times and patient information is supplied in each pouch

## Flexible Silicone Disposable Laryngeal Masks P

Item #	Size
ALM3001	#1
ALM3015	#1.5
ALM3002	#2
ALM3025	#2.5
ALM3003	#3



## Flexible Silicone Reusable Laryngeal Masks P

Item #	Size
ALM3001R	#1
ALM3015R	#1.5
ALM3002R	#2
ALM3025R	#2.5
ALM3003R	#3



- Flexible Laryngeal Mask is specially designed for use in ophthalmic, ENT, dental, oro-maxillary, and other head and neck surgeries
- Wire reinforced tube reduces risk of kinking and airway tube occlusion
- Flexible tube allows for placement away from surgical field and improves surgical access while maintaining good airtightness

Size	Patient Weight
#1	Up to 5 kg
#1.5	5-10 kg
#2	10-20 kg
#2.5	20-30 kg
#3	30-50 kg

### PVC Disposable Laryngeal Masks P

Item #	Size
<b>ALM2001</b>	#1
<b>ALM2015</b>	#1.5
<b>ALM2002</b>	#2
<b>ALM2025</b>	#2.5
<b>ALM2003</b>	#3

- Medical grade PVC with good compatibility
- No epiglottis bars for easy insertion of fiberoptic scope, introducers and suction catheters



### Flexible PVC Disposable Laryngeal Masks P

Item #	Size
<b>ALM4001</b>	#1
<b>ALM4015</b>	#1.5
<b>ALM4002</b>	#2
<b>ALM4025</b>	#2.5
<b>ALM4003</b>	#3



### Silicone Disposable Dual Seal Laryngeal Masks P

Item #	Size
<b>ALM5015</b>	#1.5
<b>ALM5002</b>	#2
<b>ALM5025</b>	#2.5
<b>ALM5003</b>	#3



### PVC Disposable Dual Seal Laryngeal Masks P

Item #	Size
<b>ALM6003</b>	#3



Size	Patient Weight
#1	Up to 5 kg
#1.5	5-10 kg
#2	10-20 kg
#2.5	20-30 kg
#3	30-50 kg

## Microflow Microdial Flowmeter



DISS Inlet • Barbed Outlet

Item#	Inlet Pressure	Inlet Pressure Range	Flow Range*
<b>RES8160032</b>			<b>A</b>
<b>RES8160034</b>	400 kPa (58 psi)	350 - 550 kPa	<b>E</b>



DISS Inlet • DISS Outlet

Item#	Inlet Pressure	Inlet Pressure Range	Flow Range*
<b>RES8160033</b>	400 kPa (58 psi)	345 - 500 kPa	<b>A</b>
<b>RES8160035</b>	350 kPa (51 psi)	250 - 450 kPa	<b>E</b>

\*Volumetric flow rates in standard liters per minute

Dial Position	Off	1	2	3	4	5	6	7	8	9	10	11
<b>Range A</b>	0	0.02	0.03	0.05	0.08	0.12	0.2	0.3	0.5	0.75	1	3
<b>Range E</b>	0	0.01	0.02	0.03	0.04	0.05	0.06	0.07	0.08	0.09	0.1	1

Ohmeda Inlet • Barbed Outlet **RES8160037**

## Assured, repeatable accuracy to enable safe, effective weaning.

### What is Microflow used for?

Microflow is primarily used to supply supplementary oxygen to infants with bronchopulmonary dysplasia (BPD).

BPD is common in very low birth weight and pre-term infants that have needed mechanical ventilation or have been treated with high oxygen concentrations due to respiratory distress syndrome (RDS)/chronic lung disease (CLD).

The risk of RDS/CLD is inversely related to birth weight and gestational age.

Infants may need very low supplementary oxygen for many months to compensate for underdeveloped lungs.



### Microflow benefits

- Enables baby to receive oxygen therapy at home, putting families together sooner and increasing parent satisfaction
- Less time in hospital, lower cost of care
- Accurate, repeatable steps
- Micro step changes in flow
- Enables low flow rates to achieve target saturation
- Enables oxygen flow to be weaned

## Mini Oxygen Regulator CGA 870 Style

Item# **RES046**

Pediatric • Barbed

0-4 LPM • **Each**

0,  $1/32$ ,  $1/16$ ,  $1/8$ ,  $1/4$ ,  $1/2$ ,  $3/4$ , 1, 1 1/2, 2, 3, 4 LPM

HCPCS# E1353

For use with E size or smaller cylinders: A, B, C, D, JD, E, M2, M4, M6, ML6, M7, M9, M15, M22, or M24.



### Both Regulators Feature

- Pressure gauge reads to 3000 PSI
- Easy-click flow selector knob
- 2-year warranty

## Mini Oxygen Regulator CGA 540 Style

Item# **RES047**

Pediatric • DISS

0-4 LPM • **Each**

0,  $1/32$ ,  $1/16$ ,  $1/8$ ,  $1/4$ ,  $1/2$ ,  $3/4$ , 1, 1 1/2, 2, 3, 4 LPM

HCPCS# E1353

For use with M60 and larger cylinders: M60, M90, M, MM, M122, M250, H, J, T or other cylinders with CGA 540 style valve.



## Child Resuscitator P

12/case

Item #	Pop-Off	Mask
<b>RES8110H</b>	Yes	None
<b>RES8111</b>	Yes	#2
<b>RES8112</b>	Yes	#3



## Infant Resuscitator P

12/case

Item #	Pop-Off	Mask
<b>RES8120H</b>	Yes	None
<b>RES8121</b>	Yes	#0
<b>RES8122</b>	Yes	#1



- Single patient use
- Set includes PVC reservoir bag, PVC mask, and disposable oxygen tubing
- 100% Medical grade PVC material
- Latex-free components
- All-in-one intake valve connects to oxygen reservoir bag directly
- Diverter is able to attach PEEP valve

## Breathing Mask P

20/case

Item #	Size	Hooks
<b>SBC01N</b>	Neonatal (#0)	No
<b>SBC01I</b>	Infant (#1)	No
<b>SBC01P</b>	Pediatric (#2)	No
<b>SBC02N</b>	Neonatal (#0)	Yes
<b>SBC02I</b>	Infant (#1)	Yes
<b>SBC02P</b>	Pediatric (#2)	Yes





## PeDIA

### Pediatric Device for Induction of Anesthesia

Item#	Color
<b>ANEP001B</b>	Blue
<b>ANEP001Y</b>	Yellow
<b>ANEP001P</b>	Purple

For children, the process of undergoing surgery is already unsettling, and the process of mask-based induction is often the most traumatizing part. With the introduction of the revolutionary Pediatric Device for Induction of Anesthesia device, or "PeDIA" for short, that stress and anxiety can be replaced with something colorful and fun.

As the world's first mask-free system and method for inhalation induction, the PeDIA provides a solution to this problem that anesthesia providers have been researching for decades. It replaces the mask with a colorful balloon, which actually allows the child to put themselves to sleep rather than being forced to submit to an unfamiliar mask.

*PeDIA resolves the problems of traditional mask induction while fostering a sense of trust and patient satisfaction.*



