

## Instructions for use



### Humidoflo High Flow Nasal Cannula

**REF** HFN001AS • HFN001AM • HFN001AL

#### Intended use

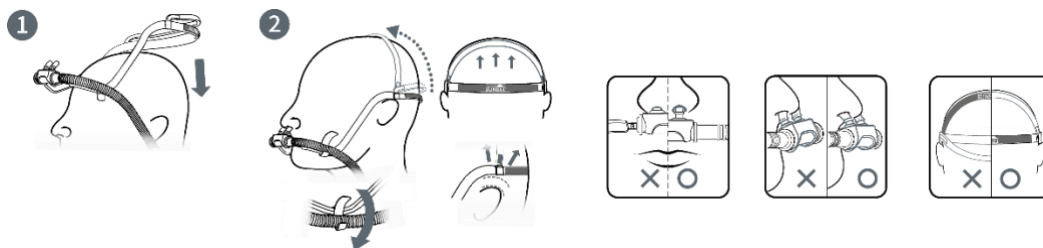
Humidiflo High Flow Nasal Cannula (Non-sterile) is intended to provide high flow oxygen therapy for adult patients with acute respiratory failure. The Humidoflo Cannula is designed to deliver air, with or without blended oxygen, up to a maximum flow of 60 L/min. The Humidoflo Cannula is for single-patient use in the hospital/clinical environment.

Indication of this product, high flow nasal cannula: Since the Humidoflo Cannula is noninvasive, PEEP (CPAP) is not measured. Despite these issues, a growing body of evidence suggests that Humidoflo Cannula is an effective modality for early treatment of patient with respiratory failure associated with diverse underlying diseases.

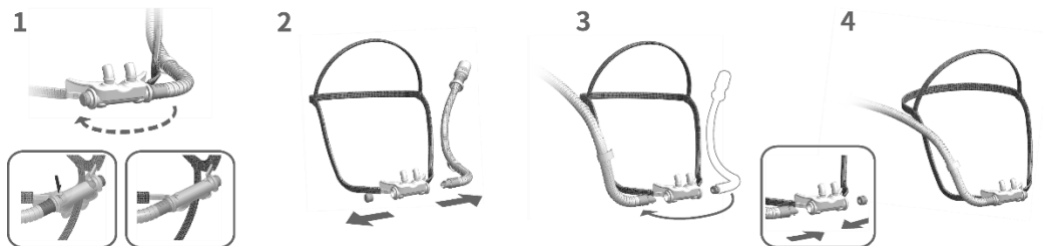
#### Contraindications

High flow oxygen therapy may generate some positive airway pressure. Contraindications for positive airway pressure devices apply: pneumothorax, pathologically low blood pressure, cerebrospinal fluid leak, recent cranial surgery or trauma, severe bullous lung disease, dehydration.

#### Fitting



#### To change the tubing attachment side



#### WARNINGS

- Do not reuse.
- Only use in approved configurations.
- Check for condensation regularly. Drain as required.
- Oxygen supports combustion. Do not use in the presence of an open flame.
- Do not use if components are damaged.
- Risk of minor nasal mucosa irritation and minor bleeding due to gas flow and mechanical contact.
- Recommended disposal after 7 days of use.

#### CAUTION

- Before connecting the nasal cannula check for adequate gas flow, oxygen and temperature.
- Ensure the nasal cannula is sized correctly and does not seal nares.

#### Technical specifications

**Setup:** For use with high flow oxygen therapy humidification systems which deliver a warm, humid air flow  $\leq 37^{\circ}\text{C}$  ( $\leq 98^{\circ}\text{F}$ ) and  $\leq 100\%$  r.h. with a maximum oxygen content of 100% O<sub>2</sub> and a flow of up to 60 L/min.

**Connection:** 22/15 mm Conical Connector (complies with ISO 5356-1).

**Flow range:**  $\leq 60$  L/min

**Environmental temperature range during use:** 65-78°F / 18-26°C

#### Disposal

This nasal cannula does not contain any hazardous substances and may be disposed of in accordance with local environmental regulations.

Manufactured for Sunset Healthcare Solutions  
141 W Jackson Blvd Ste 1950, Chicago IL 60604  
MADE IN TAIWAN